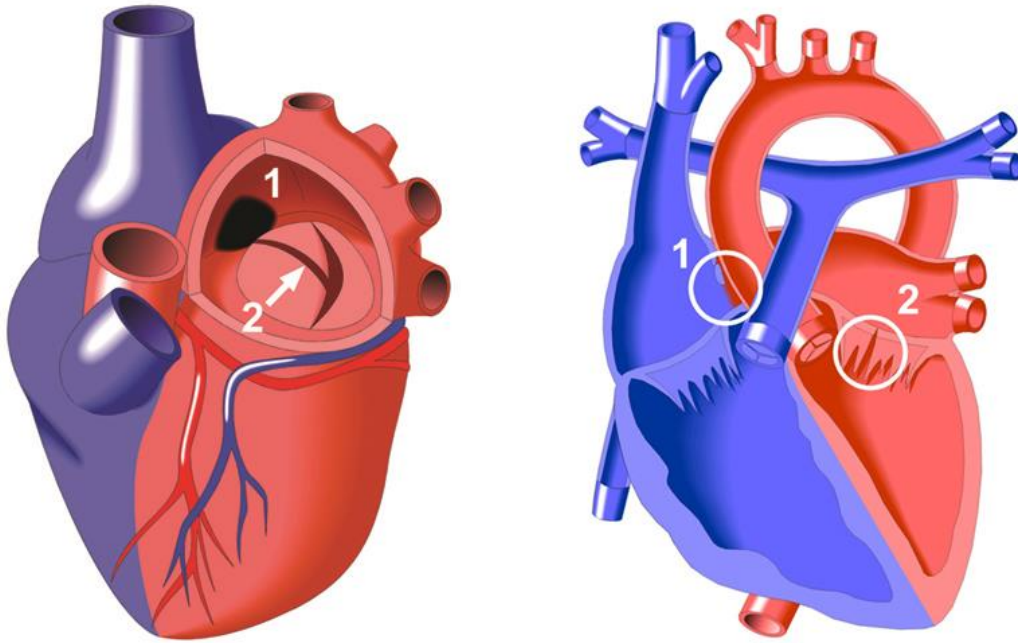


**Umgudu ongasebenzi ngendlela phakathi kwegumbi  
elingenhla nelingezansi  
(Atrioventricular Canal Defect) - Partial**



**Isihloko:**

1. Imbobo esodongeni oluphakathi kwamagumbi enhliziyu anomfutho ophansi (Atrial septal defect),
2. Umfantu nokungasebenzi kahle kwevalvu i-mitral, , ivalvu engasebenzi kahle, evuzayo phakathi kwamagumbi angakwesokunxele enhliziyu???

**Incazelo:**

**Kuyini lokho na?**

Lokhu kuyinhlanganisela yokukhubazeka okubili okwaziwa nge-partial atrioventricular septal defect:

- 1) Imbobo esengxenyeni ephansi yodonga olwahlukanisa amagumbi omfutho ophansi enhliziyu (atria), eyaziwa nge-Primum Atrial Septal Defect (ASD).
- 2) Imbobo ekuvalvu phakathi kwegumbi lwesokunxele lomfutho ophansi (eliquqayo), negumbi lenhliziyo elimqoka (okuyilona eliphampa igazi) lomfutho ophezulu (igumbi elingezansi langakwesokunxele).

**Iyini imithelela yakho na?**

Izingane ezinale nkinga zivame ukuba nomsindo osakububula kwenhliziyo, (okungumsindo ongajwayelekile ozwiwa ngudokotela). Ngesizathu sokuthi imbobo iphakathi kwamagumbi omfutho ophansi angenisa igazi enhliziyweni, kanye negumbi lomfutho ophezulu eliphampayo, yigazi eliyingcosana eliya endaweni engafanele. Ngokuvamile ingane iyaphila, bese iba nezinkinga kuphela uma ikhula. Uma imbobo evalvini inkulu ingashesha ukuba nokwehluleka kwenhliziyo kanye nezinye izinkinga isencane.

Igazi ligobhoza linqamule embotsheni, lokhu kudala ukuthi elinye igazi ligobhozele emaphashini. Umphumela walokho kuba negazi eliningi eligobhozela emaphashini, futhi kube negazi eliyingcosana eliya emzimbeni. Ivalvu evuzayo isho futhi ukuthi inhliziyo ayisebenzi kahle, bese idinga ukusebenza ngokweqile. Lezi zinkinga zidala ukwehluleka kwenhliziyo nokucinana kwamaphaphu.

Lezi zinkinga kuvame ukuthi zephuze ukuphawuleka, ingane ingaba nokutheleleka okuningi esifubeni okubi kakhulu nokuvamile ukwedlula ezinye izingane, ingazaca futhi ikhathale kalula.

**Kwelashwa kanjani na?**

Uma imbobo inkulu, futhi idala izinkinga idinga ukuvalwa. Okunye ukwelashwa kunganikezwa okungasiza inhliziyo ukumelana nomsebenzi omningi ngokweqile, lokho akuyivali imbobo.

Imbobo ingavalwa kuphela ngokuhlinzwa. Ngesikhathi sokuhlinzwa kuthungelwa isichibi embotsheni ukuyivala, amavalvu alungiswe ukuzama ukuvimba ukuvuza ngakho konke okusemandleni.