

Imbobo Esenhliziyweni (Atrial Septal Defect)

Isihloko

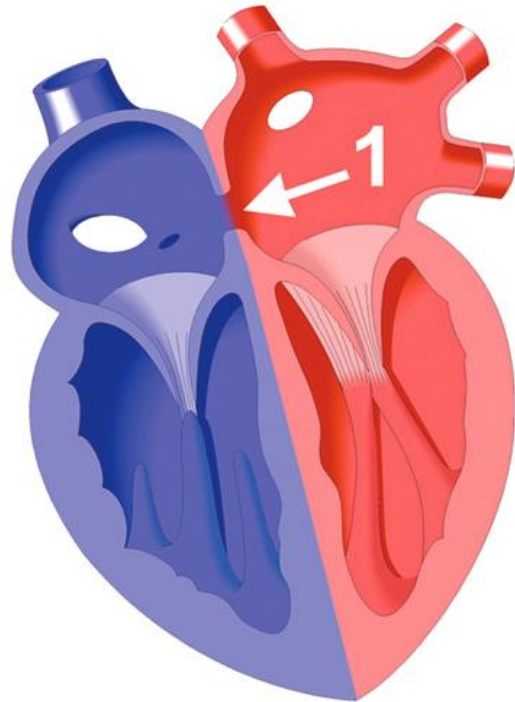
1. Imbobo Esenhliziyweni (Atrial Septal Defect).

Incazelo:

Iyini ?

I-Atrial Septal Defect (ASD) yimbobo umuntu azalwa nayo esodongeni lwenhliziyi phakathi kwamagumbi amancane amabili ayo (1 emfanekisweni). La magumbi omabili anomfutho ophansi. Ngoba umfutho ongakwesokudla ungaphansana, igazi ligobhoza lisuka kwesokunxele liye kwesokudla lihambe linqamula embotsheni. Igazi elibomvana (eligcwele i-oksijini) ebelisuka emaphashini lihamba linqamule embotsheni, bese lixubana negazi eliluhlaza sasibhakabhaka (blue blood) kwesokudla. Leli gazi elixubene libe selisuka-ke libuyela emaphashini lingasayanga emzimbeni njengokulindelekile. Lokhu kuholela ekutheni amaphaphu abe negazi eliningi kunokufanele.

Izimbobo zingenzeka noma kuphi odongeni lwegumbi elingenhla (1 emfanekisweni). Zisukela kwezincane kuye kwezinkulu kakhulu. Ngobukhulu bazo, kuba ligazi elingako eliya lapho elingafanele khona libheke emaphashini, bese nezinkinga ezidalekayo kanjalo nazo zibe nkulu. Imbobo iyimbangela yamaphesenti amahlanu nalishumi azo zonke izifo zenhliziyi izingane ezizalwa nazo. Izinkinga zembobo ziphindwe kabili kumantombazane kunakubafana.



Iyini imithelela yayo na?

Uma imbobo incane (ngaphansi kwamamilimitha amabili), kunethuba elikhulu lokuthi izivalekele. Izimbobo ezincane zivumela kuphela igazi elincane ukuba lidlulele endaweni engafanele, ngakho aziyidali inkinga, ngaleso sizathu azidingi ukuvalwa...

Ezinkulu izimbobo kazizivalekeli. Uma imbobo inkulu, igazi eliningi lidlula ngayo, bese liya ohlangothini lwesokudla nasemaphashini. Ngokuhamba kwesikhathi, uhlangothi lwenhliziyi lwesokudla luyavuvukala, bese kuthi amaphaphu alimale. Izingane ezinale nkinga zikhathala kalula, ngokuvama zithole izifo zamaphaphu kunezinye izingane, kanti futhi zingahle zingakhuli kahle.

Yelashwa kanjani na?

Uma imbobo inkulu, futhi idala izinkinga, kumele ivalwe. Eminye imithi inganikezwa esiza inhliziyi ukuba ikwazi ukumelana nomsebenzi ongaphezu kwayo, leyo mithi kayiyivali imbobo. Imbobo ingavalwa ngokuhlinzwa, okungukuyithunga ivaleke. Kwesinye isikhathi uma imbobo ingenkulu kakhulu, futhi imi ngendlela efanele, ingavalwa ingahlinzwanga, ngokuthi ifakelwe "okusasivalo".