

I-Pulmonary Stenosis

INkcazelo eMfutshane:

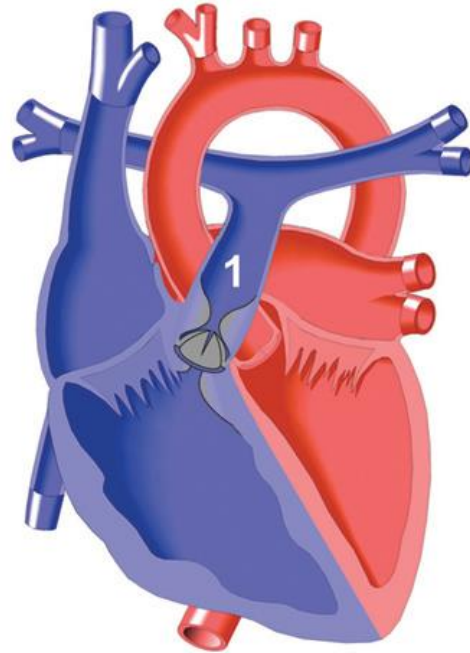
1. I-Stenosis of the pulmonary valve.

Inkcazelo ngokubanzi:

Yintoni leyo?

Kukho ukublokeka kokuhamba kwegazi elisuka entliziyweni lusiya kwimiphunga. Ivaluva kumbhobho ophakathi kwentliziyo nemiphunga ayingowesiqhelo. Ideki futhi ayivuleki ngendlela efanelekileyo, ngenxa yoko, igazi alikwazi ukuhamba ngokulula ukuya emiphungeni. Ngenxa yokuba ivaluva ingaqhelekanga, ngamanye amaxesha iye ivuze – oko kuthi kuvumele igazi elithile libuye umva liye entliziyweni endaweni yokuba liye kwimiphunga.

Oku kublokeka ngamanye amaxesha kungezantsi kwevaluva okanye ngasentla kwevaluva. Ukublokeka kwevaluva yenye yezona ngxaki ziqhelekileyo zentliziyo ezifumaneka ebantwaneni.



Zithini iziphumo zayo?

Umntwana onale ngxaki uye angabonakalisi zimpawu, ukuba ukublokeka kungamandla , umntwana angaphfumla ngokukhawuleza, kubenzima ukutya futhi adinwe ngokukhawuleza.

Icala elingasekunene lentliziyo kufuneka limpompe igazi eligqitha kule valuva iblokekileyo, ukwenza oku, kufuneka impompe ngamandla angaphaya kunesiqhelo. Oku kubangela intliziyo esekunene ibe deki, ekuhambeni kwexesha iyadinwa ize ingakwazi ukusebenza – oku kwaziwa njengokungasebenzi kakuhle kwentliziyo okanye i-heart failure ngolwimi lwasemzini.

Kunyangwa njani oku?

Ukuba oku kublokeka akugqithisanga, kungangadingeki ukuba kunyangwe, koko kuxilongwe rhoqo. Ukuba akugqithisanga, kunganyangwa nangokusebenzisa ibhaluni. Ibhaluni igqithiswa ukusuka kwimibhobho esemlenzeni, ukuya entliziyweni, ize idlule kwivaluva eblokekileyo. Iye ivuthelwe ize ivule ivaluva evalekileyo.

Ngamanye amaxesha, utyando luyafuneka ukuze luvule ukublokeka. Ukuba ukublokeka kungasentla okanye kungezantsi kwevaluva, utyando luye lufuneka.