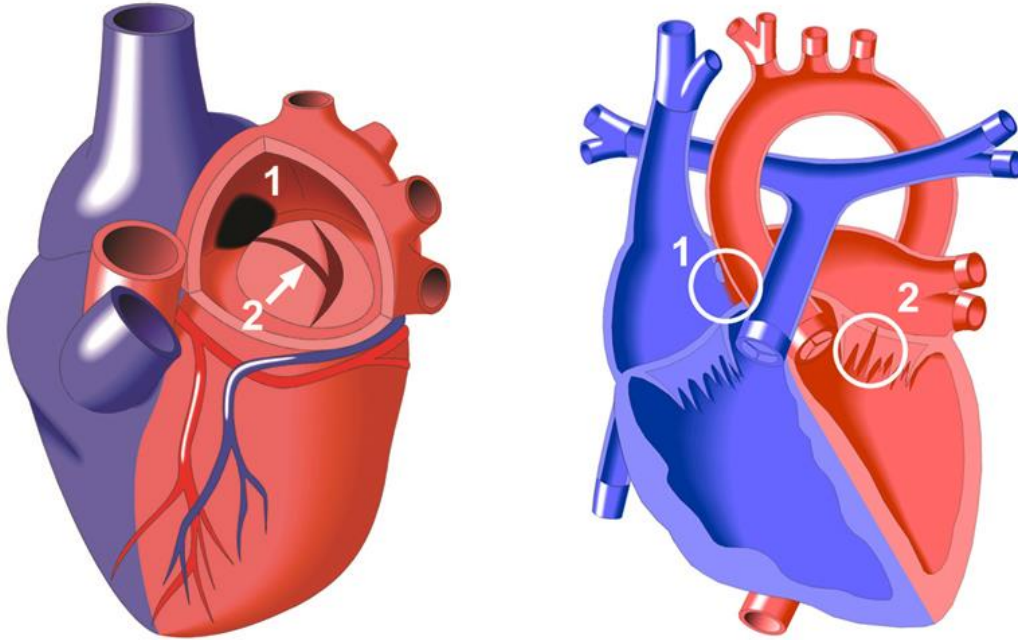


I - Atrioventricular Canal Defect) - Partial



INkcazelo eMfutshane:

1. I-Atrial septal defect, Umngxuma eludongeni oluphakathi kwamacala oxinzelelo oluphantsi lwentliziyo.
2. Umfanta nobulima kwivaluva i-mitral, Ubulima, ivaluva evuzayo phakathi kwamacala entliziyo asekhohlo???

Inkcazelo ngokubanzi:

Yintoni leyo?

Ikwaziwa njenge-partial atrioventricular septal defect, oku kukuhlangana kweziphene ezibini:

- 1) I-Primum Atrial Septal Defect (ASD), okanye umngxuma kwicala elisemazantsi kudonga olwahlula amacala oxinzelelelo oluphantsi lwentliziyo (atria).
- 2) Umfanta kwiValuva i-Mitral, isithuba/umngxuma kwivaluva ephakathi kwecandelo loxinzelelo oluphantsi olusekhohlo (oluqokelelayo) (i-atrium esekhohlo) kunye necandelo eliphambili (elimpompayo) loxinzelelo oluphezulu (igunjana elisekhohlo) lentliziyo.

Zithini iziphumo zayo?

Abantwana abanale ngxaki baye babenesandi entliziyyeni okwaziwa njenge-murmur ngolwimi lwasemzini (ingxolo okanye ukudumzela okungaqhelekanga entliziyyeni okuviwa ngugqira). Njengoko umngxuma uphakathi kwamacala aqokelelayo anoxinzelelo oluphantsi kunye necandelo elimpompayo elinoxinzelelo oluphezulu, ligazana elingephi elithi lihambe ngendlela engafanelekanga. Umntwana uye abe uphilile aze abeneengxaki kuphela xa ekhula. Ukuba umngxuma kwivaluva mkhulu, banganokungasebenzi kakuhle kwentliziyo kunye neengxaki kwangethuba.

Igazi lihamba kulo mngxuma, oku kubangela igazi elongezelelekileyo ukuba lihambe liye kwimiphunga. Ngenxa yoku, kukho igazi elongezelelekileyo eliya kwimiphunga, kukwakho negazi elingephi eliya

emzimbeni. Ivaluva evuzayo ikwathetha ukuba intliziyo ayisebenzi ngokufanelekileyo kengoko kufuneka isebenze ngamandla. Ezi ngxaki zibangela ukungasebenzi kakuhle kwentliziyo kunye nemiphunga eminxeneyo.

Ezi ngxaki ziye zithathe ixesha ekubeni ziqhaphелеke, umntwana angafumana izifo ezininzi ezosulelayo zesifuba ezingaphaya kwamandla futhi kumaxesha amaninzi kunabanye abantwana, bangangatyebi futhi badinwe ngokulula.

Kunyangwa njani oku?

Ukuba umngxuma mkhulu futhi ubangela iingxaki, kufuneka uvaliwe. Unyango oluthile lunganikezelwa olunceda intliziyo ukuba ikwazi ukusebenza lo msebenzi wongezelelekileyo, oku akubangeli ukuba umngxuma uvaleke.

Umngxuma ungavalwa ngotyando kuphela. Ngexesha lokwenziwa kotyando, kuthungelwa ipetshi kulo mngxuma ukuze uvaleke, kulungiswe iivaluva ngeenzame zokuyekisa ukuvuza kangangoko banako.