

I - Atrial Septal Defect

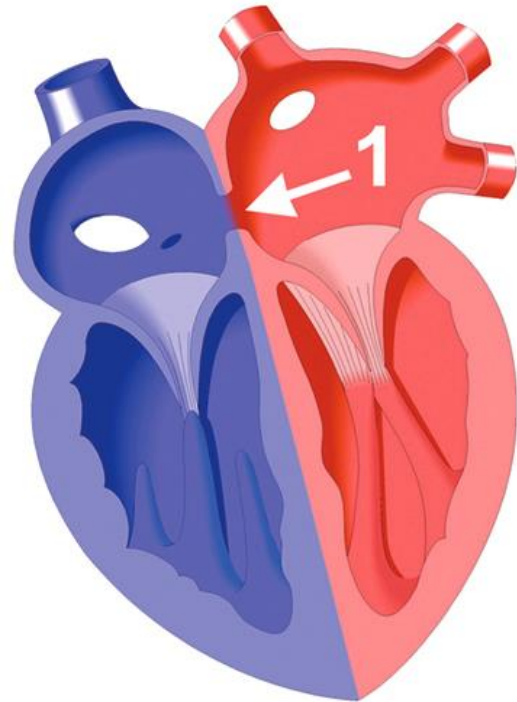
INkcazelo eMfutshane:

1. I-Atrial Septal Defect.

Inkcazelo ngokubanzi:

Yintoni leyo?

I-Atrial Septal Defect (ASD) ngumngxuma eludongeni lwentliziyo phakathi kwamacala amabini amancinci entliziyo (1 kumzobo). La macala omabini anoxinzelelo oluphantsi. Ngenxa yokuba uxinzelelo ekunene luphantsi, igazi lihamba ukusuka ekhohlo ukuya ekunene linqamleze umngxuma. Igazi elipinki (eline-oksijini) elisuka emiphungeni lihamba kulo mngxuma lize lixubane negazi elibhlowu ekunene. Eli gazi lixubeneyo liye libuyele emva emiphungeni endaweni yokuya emzimbeni. Oku kubangele ukuba imiphunga ibe negazi elingaphezulu kwelo bekufaneleke ukuba inalo.



I-Atrial Septal Defects ingenzeka nandawoni kwi-atrial septum (1 kumzobo). Ukususela kweyona incinci kakhulu ukuya kweyona inkulu. Ngokuye ibankulu, liye libe lininzi kakhulu igazi elihamba ngendlela engafanelekanga ukuya emiphungeni futhi oko kubangele iingxaki ezininzi. I-Atrial Septal Defects yenzeka phakathi kwesi-5 ne-10 leepesenti zezifo zentliziyo abantwana abazalwa benazo. Ii-ASD zenzeka ngokuphindwe kabini emantombazaneni kunasemakhwenkweni.

Zithini iziphumo zayo?

Ukuba umngxuma mncinci (ungaphantsi kweemilimitha ezi-2), kukho ithuba elikhulu lokuba ungazivala ngokwawo. I-mngxuma emincinci ivumela kuphela igazi elincinci ukuba liye kwindlela engafanelekanga kengoko ayibangeli zingxaki konke-konke. Futhi akukho mfuneko yokuba ivalwe...

Ii-ASD ezinkulu azizivali ngokwazo. Xa umngxuma umkhulu, igazi elininzi lihamba apha kuwo lize liye kwicala elisekunene lentliziyo nemiphunga. Emva kwexesha, intliziyo esekunene iye ibenkulu futhi nemiphunga yonakale. Abantwana abanale ngxaki badinwa ngokukhawuleza, bafumana izifo ezosulelayo zemiphunga rhoqo kunabanye abantwana, kwaye bangangakhuli ngendlela efanelekileyo.

Kunyangwa njani oku?

Ukuba umngxuma mkhulu futhi ubangela iingxaki, kufuneka uvaliwe. Unyango oluthile lunganikezelwa olunceda intliziyo ukuba ikwazi ukusebenza lo msebenzi wongezelekileyo, oku akubangeli ukuba umngxuma uvaleke. Umngxuma ungavalwa ngotyando, apho uyakuthi uthungwe, uvaleke. Ngamanye amaxesha ukuba umngxuma awukho mkhulu kakhulu futhi ukwindawo efanelekileyo, ungavalwa ngaphandle kotyando, ngokufakela “iplagi” kulo mngxuma.