

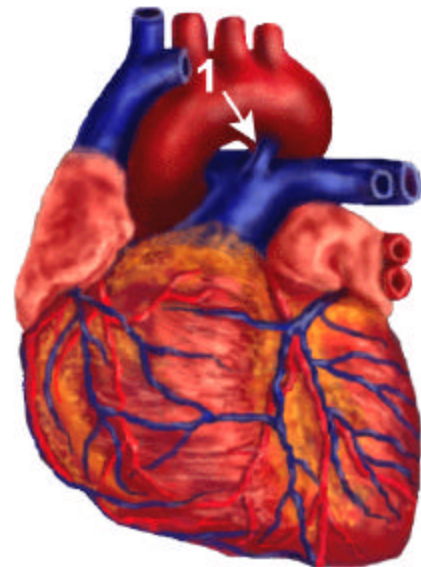
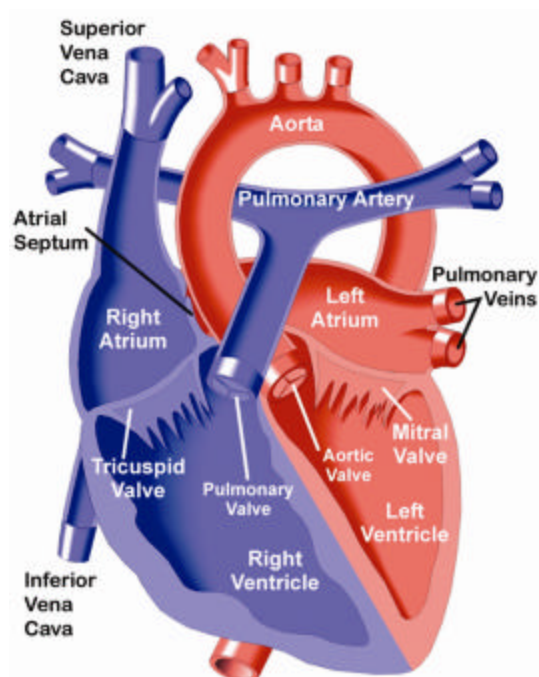
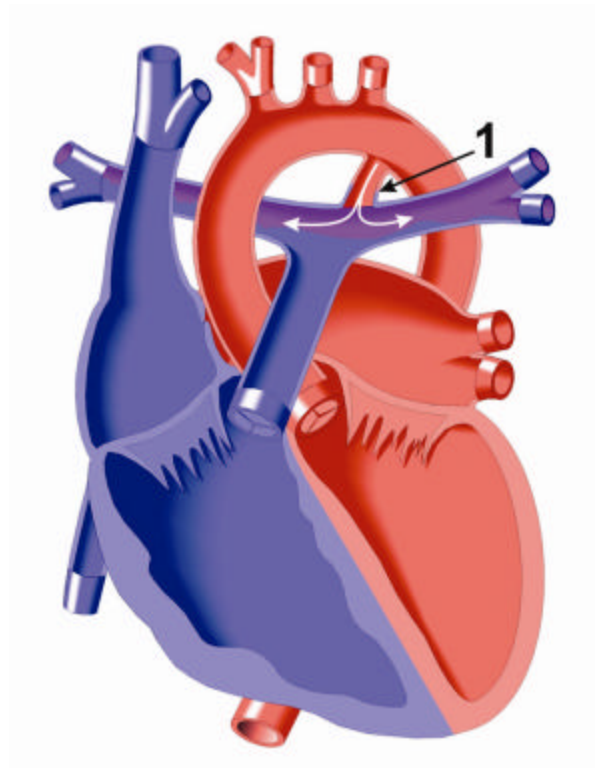
Patent Ductus Arteriosus

A Ductus Arteriosus is a minor vessel, sometimes persisting from the fetal structure of the heart in a newborn baby, which connects the aorta to the pulmonary artery.

It is termed a Patent Ductus Arteriosus (PDA) when it is open, allowing blood to flow from the aorta into the pulmonary artery. After the PDA closes, the resulting fiber-like structure is known as a ligamentum arteriosum.

The persistence of the Patent Ductus Arteriosus (PDA) after birth causes difficulties because it increases blood flow to the lungs and raises the blood pressure in the pulmonary arteries. If the ductus arteriosus remains open (patent), heart failure may occur.

In some congenital heart defects (eg. Tricuspid Atresia, Hypoplastic Left Heart), the PDA is actually a benefit as it allows necessary mixing of blood. However, when the PDA closes, as it normally does soon after birth, children with these defects experience problems which require treatment.



Above:
1. Patent ductus arteriosus

Left: Normal Heart