

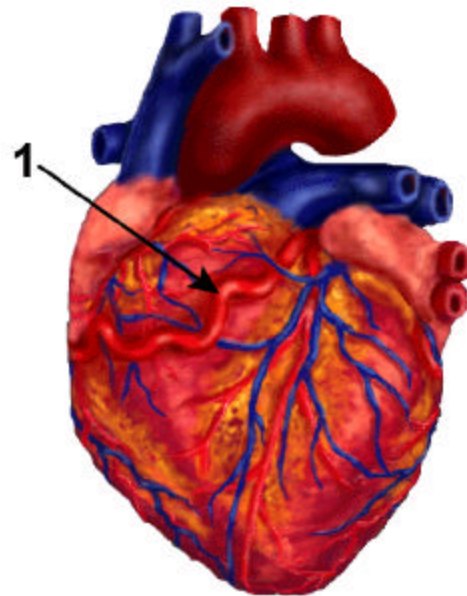
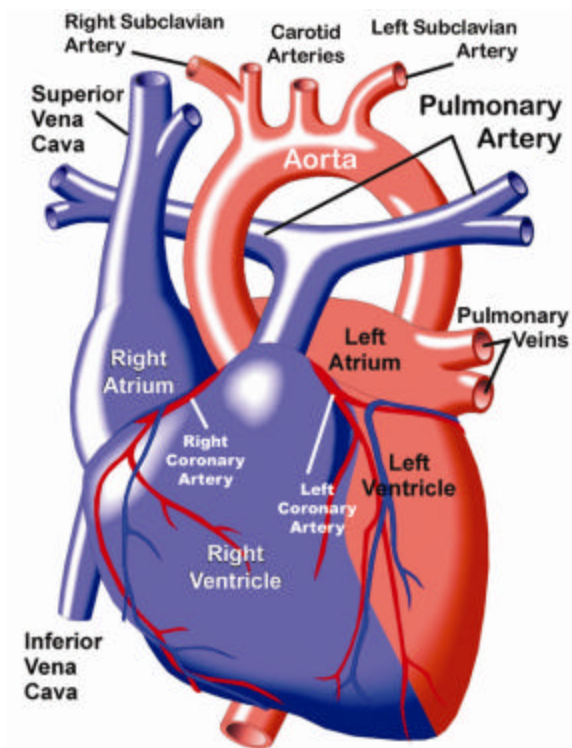
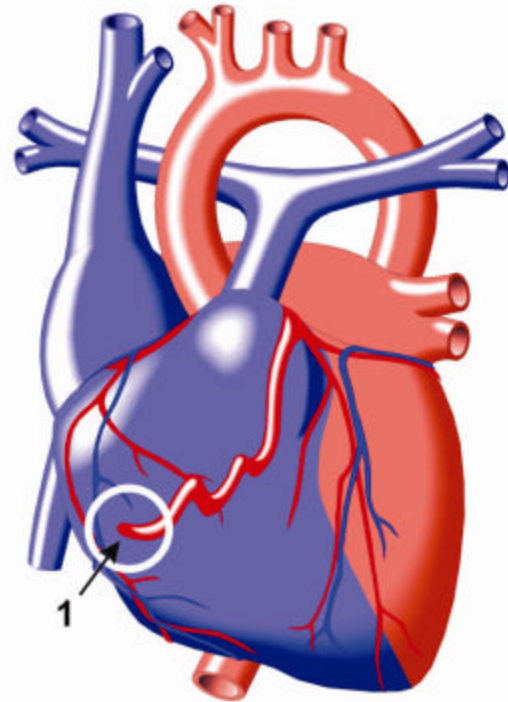
# Coronary Artery Fistula

The coronary arteries are the blood vessels that carry oxygen-rich blood to the heart muscle.

In this defect, one of these arteries (usually the left coronary artery) is abnormally formed. Rather than connecting with a coronary vein, as in the normal heart, it enters one of the heart chambers, usually on the right side. In rare cases, the abnormal coronary artery may enter the aorta or pulmonary artery, or one of their branches, rather than a heart chamber.

A fistula is an abnormal connection between two hollow organs in the body - in this case, a coronary artery and a chamber of the heart, or another vessel.

Children with coronary artery fistula normally show no symptoms other than a heart murmur.



**Above:**

1. A large branch from the left anterior descending artery makes a fistulous connection to the right atrium. Produces a continuous murmur and a left to right shunt.

**Left:** Normal Heart