

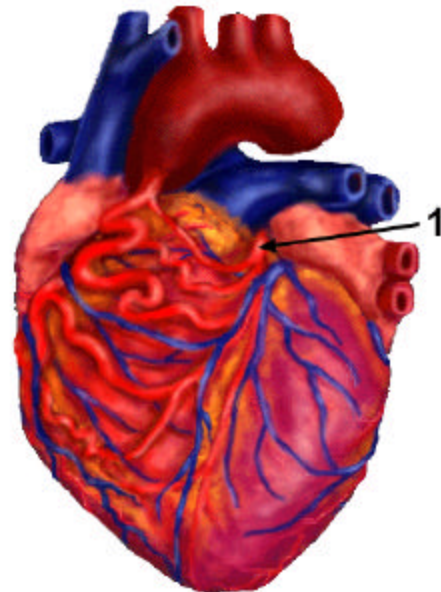
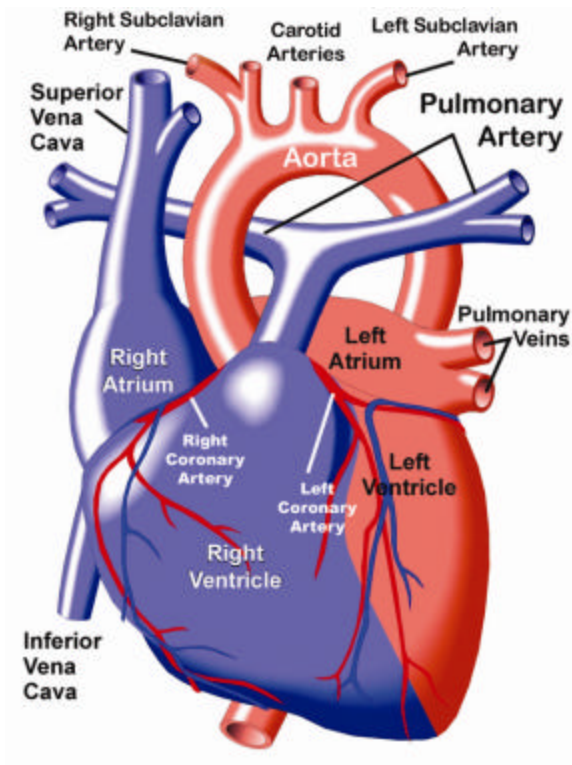
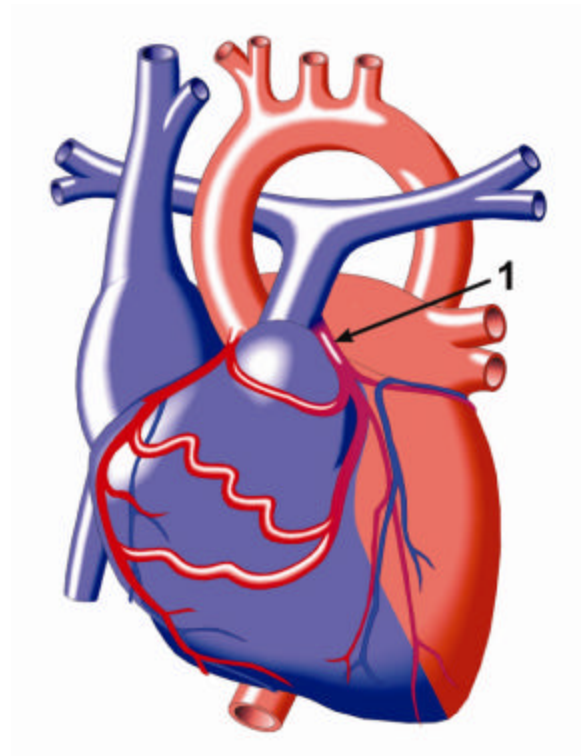
## Anomalous Left Coronary Artery

In this very rare defect, affecting boys and girls equally, the left coronary artery, which supplies oxygen-rich blood to the heart muscle, is "anomalous," or abnormal, in form.

In the normal heart, the left coronary artery arises from the aorta, the large vessel that carries oxygen-rich blood from the heart to the body. However, in this case, the left coronary artery arises from the pulmonary artery instead of from the aorta.

The pulmonary artery carries oxygen-depleted blood from the heart to the lungs. Because the anomalous left coronary artery receives its blood from the pulmonary artery rather than the aorta, it supplies the heart muscle with blood that is low in oxygen.

Secondly, as the blood pressure is three times lower in the pulmonary artery than in the aorta, blood will tend to flow backwards into the pulmonary artery from the coronary artery. This stealing of blood away from the heart muscle can have dire consequences resulting in heart attacks in children in the first year of life. This defect results in decreased heart function, poor feeding, and irritability.



**Above:**

1. Left coronary artery originates from pulmonary artery.

**Left:** Normal Heart